

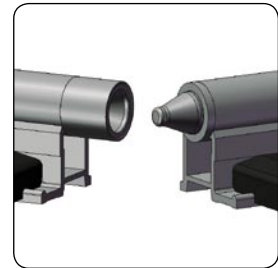
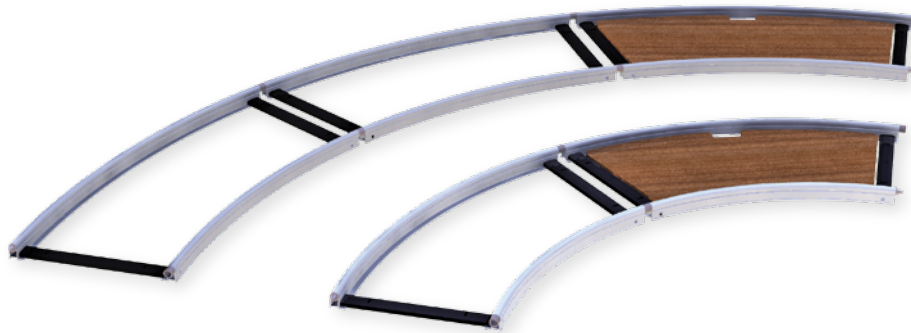


**KEY GRIP SYSTEMS**  
Development

# TRACK SYSTEMS

## Curved Tracks & Curved Monotracks

### Curved Tracks



### Lightness & rigidity

The **KGS Development Curved Track design** reduces the number of sleepers and ensures excellent results in terms of lightness and rigidity.

Each section of tracks is levelled on the ground by the self supporting pipes. The sleepers only determine the track width without contact to the ground.

### Curved Monotracks



### Modular

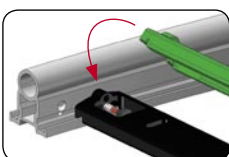
The **KGS Development Curved Monotracks** is a «modular curved track system concept» based on 4 bent tubes joined by removable sleepers.

> the 4 different diameters fit together thanks to the regular curved sleepers (24,5") allowing to setup 3 different sizes of curved tracks.

> the Monotrack curved pipes assembled by the flexible self alignment connector provide a high precision tracks alignment and smooth connections.

**Monotrack curved tubes are symmetrical** and designed to hold regular curved sleepers with 4 simple fixing processes: Mounted, locked, fixed or screwed. The assembly of the KGS development curved Monotracks is achieved very fast and adapted to any shot.

Mounted



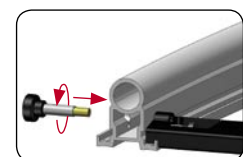
Locked



Fixed



Screwed





**KEY GRIP SYSTEMS**  
Development

# TRACK SYSTEMS

## Curved Tracks & Curved Monotracks

### Curved Tracks

Ø 13"



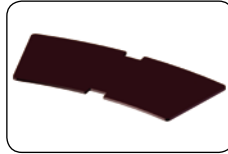
ref.	Width	section
FRC 002	24,5"	45°

Ø 20"



ref.	Width	section
FRC 001	24,5"	30°

Step boards



ref.	Ø	section
FRC 010	13'	30°
FRC 011	20'	45°

Starter ramp



ref.	width
FSR 001	24,5"

Joiner



ref.
FRX 003

### Curved Monotracks

Curved Monotracks



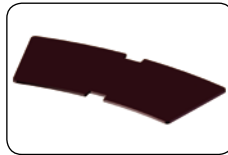
ref.	Ø	section
CMC 104M	21,2'	30°
CMC 105M	25,3'	30°
CMC 106M	29,4'	30°
CMC 107M	33,4'	30°

Curved Monotracks sleepers



ref.	width
CMC 001	24,5"

Curved Monotracks step boards



ref.	Ø	section
FRC 012	26'	30°
FRC 013	30'	30°
FRC 014	33'	30°

Starter ramp



ref.	width
FSR 001	24,5"

Joiner



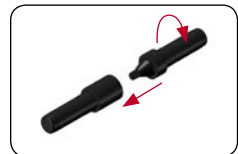
ref.
FRX 003

Flexible self alignment connector



ref.
CMC 112

Flexible adapter to curved track



ref.	male	female
CMC 110		
CMC 111		

