



KEY GRIP SYSTEMS  
Development

# TRACK SYSTEMS

## Monotracks



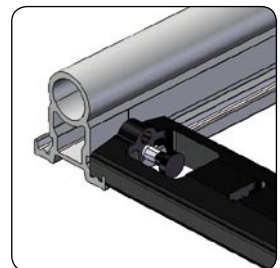
### Modular

The **KGS Development Monotracks** is a «modular track system concept» based on simple tracking tubes joined by removable sleepers. The sleepers come in a range of different lengths to ensure precisely the width of the track required.

The Monotrack pipes are joined together by the «self alignment connector» providing a high precision track alignment and smooth connection.

Monotrack tubes are symmetrical and designed to hold sleepers with 4 simple fixing processes: mounted, locked, fixed or screwed.

The assembly of the KGS development Monotracks is achieved very fast and adapted to any shot.





**KEY GRIP SYSTEMS**  
Development

# TRACK SYSTEMS

## Monotracks

### Monotrack



ref.	length
FMO 020	2'
FMO 021	3'
FMO 022	4'
FMO 023	6'
FMO 024	8'
FMO 025	10'
FMO 026	12'
FMO 027	16'
FMO 028	20'

### Sleepers



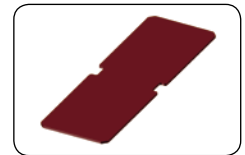
ref.	width	ref.	width
FMO 058 Minitrack	12,6"	FMO 063 Crane	34,6"
FMO 059 Narrow Pee Wee	16,0"	FMO 069 Fisher 10 crab	36,7"
FMO 060 Standard dollies	24,5"	FMO 067 Crane	39,4"
FMO 071 Fisher dolly	24,7"	FMO 064 Wide crab Hybrid	41,2"
FMO 061 Wide Track Hybrid	30,5"	FMO 065 Technocrane	57"
FMO 062 Crab Pee Wee	31,5"		
FMO 072 Crab Pee Wee IV	26,4"		

### Monotrack starter ramp



ref.	length
FSM 001	short
FSM 002	long

### Step boards



ref.	length	width
FRX 020	4	24,5"
FRX 021	8	24,5"
FRX 022	4	34,6"
FRX 023	8	34,6"

### Self alignment connector



ref.	
FMO 098	Long
FMO 099	Short
FMO 100	Locker

### Adapter to straight track



ref.
FRX 001
FRX 001

### Monotrack screws



ref.
FMO 097

### Joiner



ref.
FRX 003

### Protection plastic profile

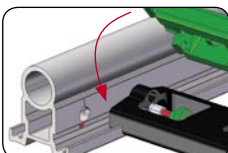


ref.
FRX 002

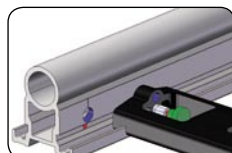
### > 4 ways of fixing the Monotracks sleepers

- Mounted** The sleepers are simply mounted, the tubes are held in position and the dolly width is determined.
- Locked** A spring locks the sleepers to the Monotrack tubes and allows the assembly to be carried.
- Fixed** The locked sleepers are fixed onto the Monotrack tubes. The tensioning devices can be mounted.
- Screwed down** When using heavy loads (cranes...) the sleepers can be screwed tightly to hard mount the track.

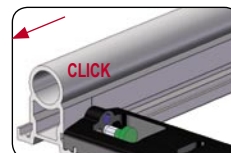
#### Mounted



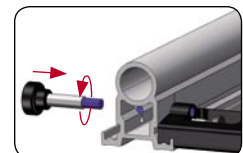
#### Locked



#### Fixed



#### Screwed



All widths and lengths are available upon request.