



KEY GRIP SYSTEMS
Development

TRACK SYSTEMS

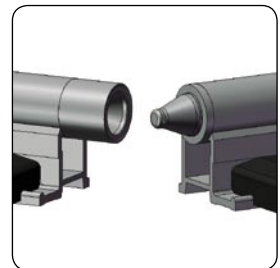
Straight Tracks



Lightness

The **KGS Development Track** design reduces the number of sleepers and ensures excellent results in terms of lightness and rigidity

Each section of tracks is levelled on the ground by the self supporting pipes. The sleepers only determine the track width without contact to the ground.

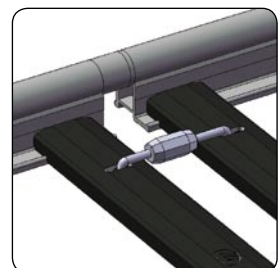


Solidity & Precision

All the parts of **KGS Development Tracks** contribute to precise results.

- > high resistance stainless steel connectors;
- > tracks and sleepers are manufactured in different types of aluminium alloy;
- > pre-stressed mechanical assembly.

Plastic profiles guarantee protection during transport and storage.





KEY GRIP SYSTEMS
Development

TRACK SYSTEMS

Straight Tracks

24,5" width



ref.	length
FRD 040	2'
FRD 041	3'
FRD 042	4'
FRD 043	6'
FRD 044	8'

34,6" width



ref.	length
FRD 046	2'
FRD 047	3'
FRD 048	4'
FRD 049	6'
FRD 050	8'

39,4" width



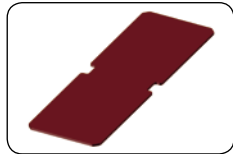
ref.	length
FRD 055	2'
FRD 056	3'
FRD 057	4'
FRD 058	6'
FRD 059	8'

Starter ramp



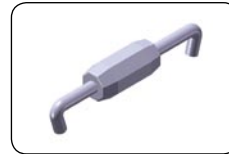
ref.	width
FSR 001	24,5"
FSR 002	34,6"
FSR 003	39,4"

Step board



ref.	length	width
FRX 020	4'	24,5"
FRX 021	8'	24,5"
FRX 022	4'	34,6"
FRX 023	8'	34,6"

Joiner



ref.
FRX 003

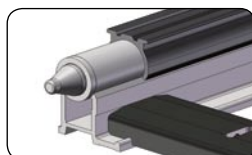
Protection plastic profile



ref.
FRX 002



Removable step boards are available for all models of KGS Development Tracks.



The removable plastic profile ensures that the Tracks are protected.

All widths and lengths are available upon request.